

# EVAPCO, INC.

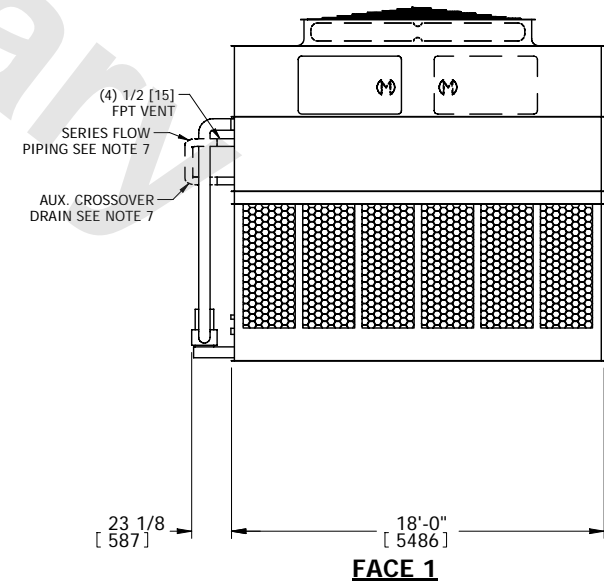
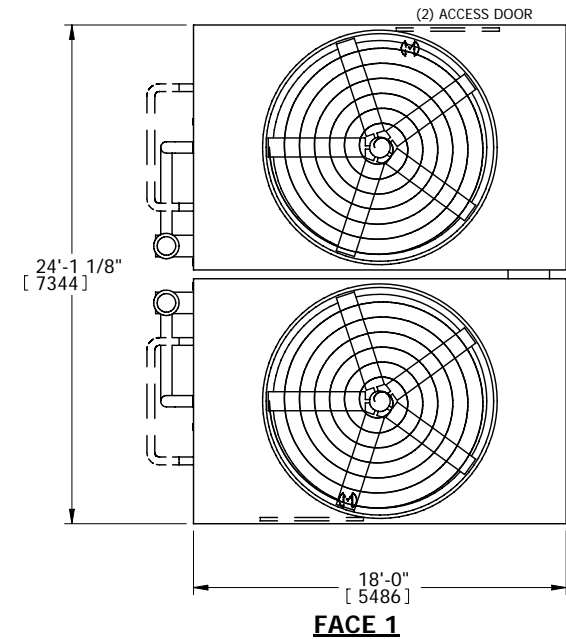
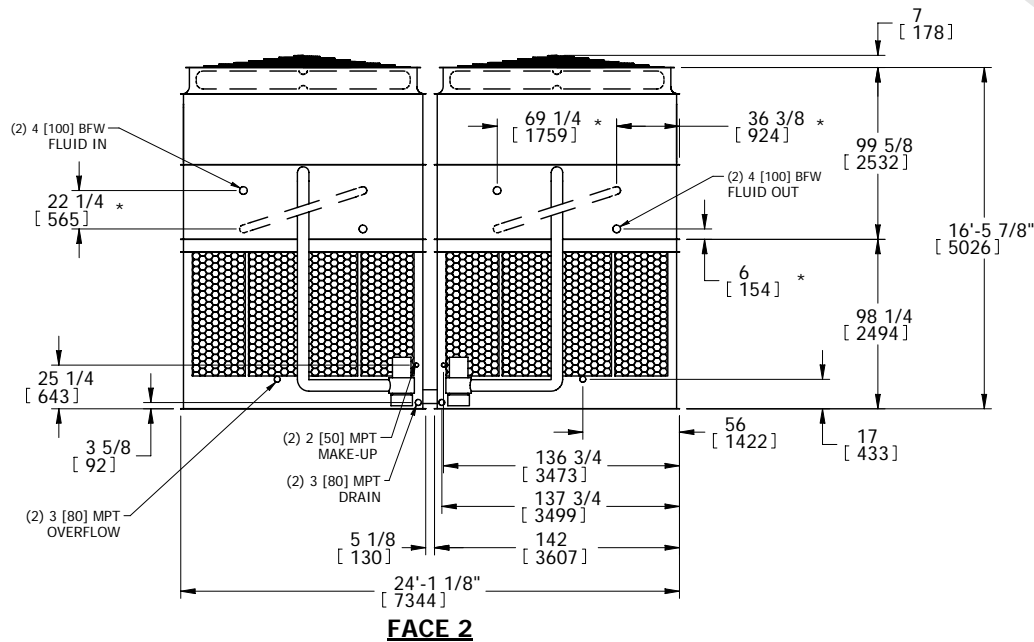


UNIT	MODEL #	SCALE	DWG. #	REV.	DATE	SERIAL #
<b>CLOSED CIRCUIT COOLER</b>	ATWB 24-3N18-Z		WB3241806-DRA-SF		12/16/2025	

## NOTES:

1. (M)- FAN MOTOR LOCATION
2. HEAVIEST SECTION IS UPPER SECTION
3. MPT DENOTES MALE PIPE THREAD  
FPT DENOTES FEMALE PIPE THREAD  
BFW DENOTES BEVELED FOR WELDING
4. +UNIT WEIGHT DOES NOT INCLUDE  
ACCESSORIES (SEE ACCESSORY DRAWINGS)
5. MAKE-UP WATER PRESSURE  
20 psi MIN [137 kPa], 50 psi MAX [344 kPa]
6. \*-APPROXIMATE DIMENSIONS DO NOT USE  
FOR PRE-FABRICATION OF CONNECTING  
PIPING
7. SERIES FLOW PIPING AND AUX. CROSSOVER  
DRAIN BY OTHERS.

## FACE 2 PLAN VIEW



SHIPPING WEIGHT	41000 lbs+ [18597] kg+	OPERATING WEIGHT	66880 lbs+ [30336] kg+	HEAVIEST SECTION WEIGHT	16580 lbs+ [7521] kg+	NO. OF SHIPPING SECTIONS	4
-----------------	------------------------	------------------	------------------------	-------------------------	-----------------------	--------------------------	---