

UNIT	CONDENSER	
MODEL #	eco-PMRC-1256	SCALE NTS

EVAPCO, INC.

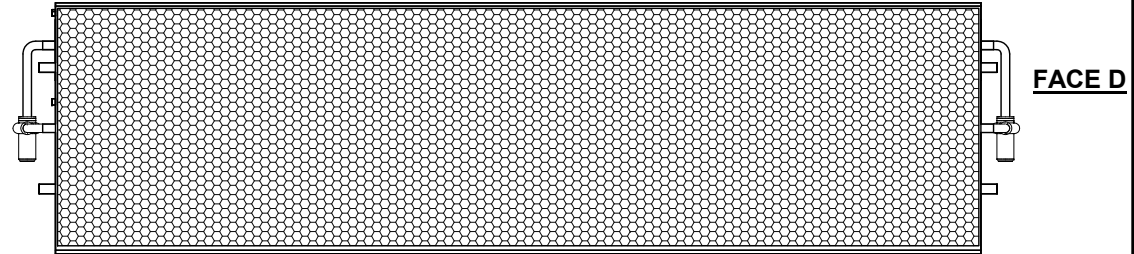


DWG. #	CEWRTM3612-DRA-ST	REV	-
SERIAL #		DATE:	4/6/2026

NOTES:

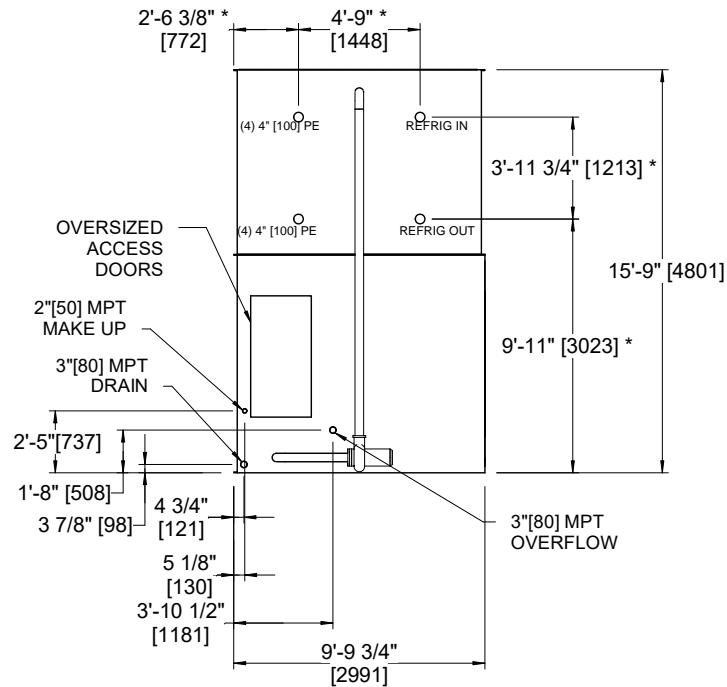
- (M)- FAN MOTOR LOCATION.
- MPT DENOTES MALE PIPE THREAD
FPT DENOTES FEMALE PIPE THREAD
BFW DENOTES BEVELED FOR WELDING
GVD DENOTES GROOVED
FLG DENOTES FLANGE
PE DENOTES PLAIN END
- +UNIT WEIGHT DOES NOT INCLUDE ACCESSORIES (SEE ACCESSORY DRAWINGS).
- 3/4" [19mm] DIA. MOUNTING HOLES. REFER TO RECOMMENDED STEEL SUPPORT DRAWING.
- MAKE-UP WATER PRESSURE 20 psi [137 kPa] MIN, 50 psi [344 kPa] MAX.
- DIMENSIONS LISTED AS FOLLOWS:
ENGLISH FT-IN
[METRIC] [mm]
- * - APPROXIMATE DIMENSIONS DO NOT USE FOR PRE-FABRICATION OF CONNECTING PIPING.

FACE C

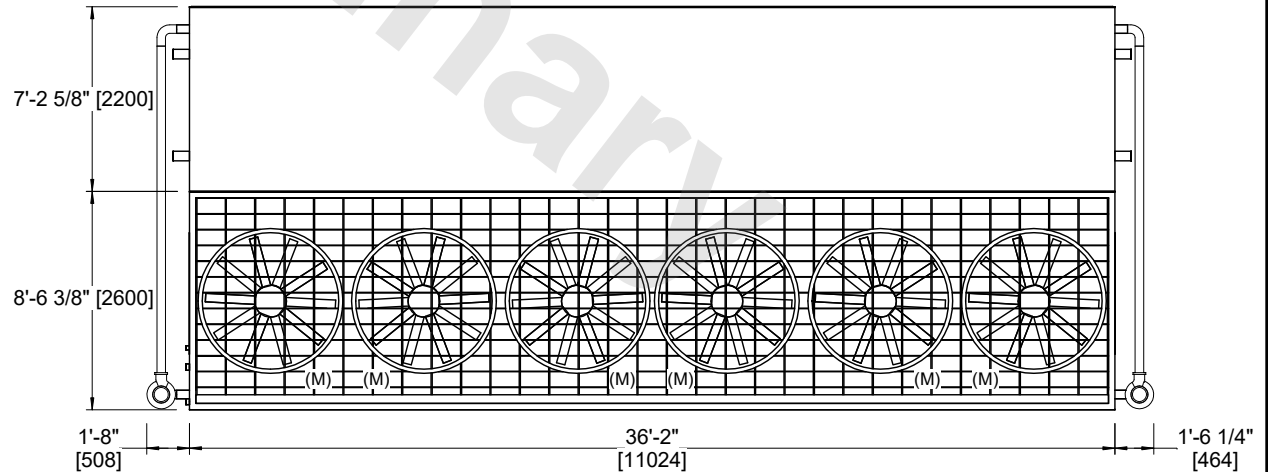


FACE B
PLAN VIEW

FACE A



FACE B



FACE A

SHIPPING WEIGHT	69990 lbs+ [31750] kg+	OPERATING WEIGHT	82510 lbs+ [37430] kg+	HEAVIEST SECTION WEIGHT	28090 lbs+ [12745] kg+	NO. OF SHIPPING SECTIONS	3	DRAWN BY:	JLG
-----------------	------------------------	------------------	------------------------	-------------------------	------------------------	--------------------------	---	-----------	-----