

This document is the property of Evapco, Inc. It should not be copied or disclosed without prior written authorization.

MODEL #

U-EJETME4-3746F0033F1KA

N.T.S.

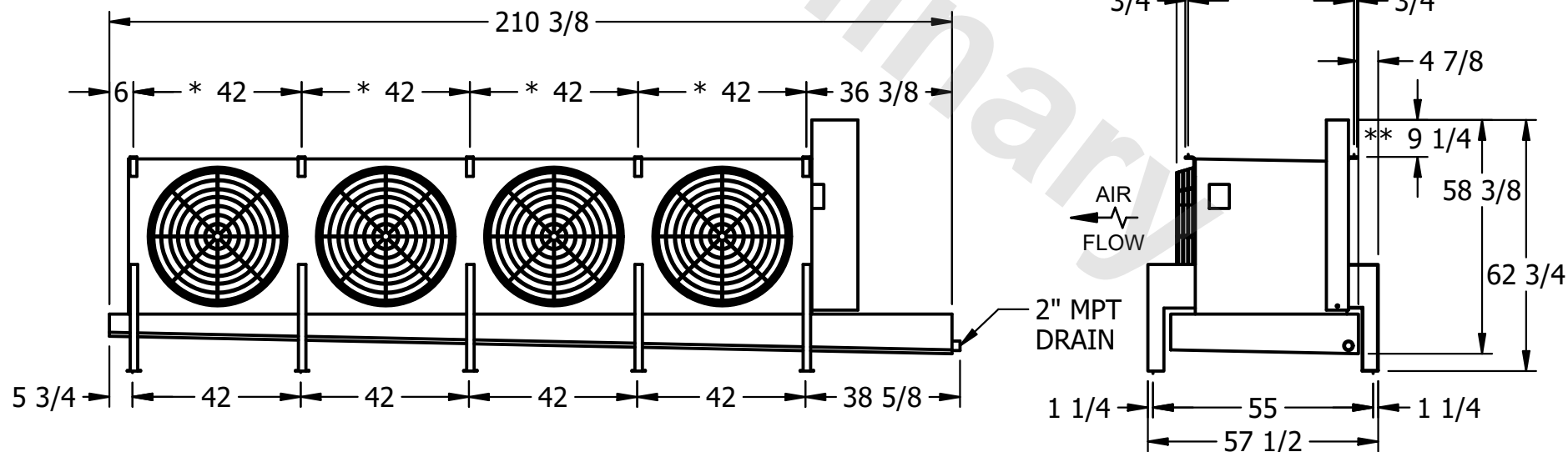
UEJETM4-SE-16,18

REV. 0

DATE	9/17/2025
------	-----------



- 1) \* = HANGER HOLE LOCATION.
- 2) RIGHT HAND MODEL SHOWN.
- 3) HANGER HOLES ARE FOR 3/4 INCH THREADED ROD.
- 4) WATER DEFROST ADDS 1 3/4" INCHES TO HEIGHT OF STANDARD UNIT AND CHANGES DRAIN SIZE.
- 5) ALL DIMENSIONS ARE FOR REFERENCE AND SHOULD NOT BE USED FOR PREFABRICATION OF PIPING OR SUPPORTS.
- 6) \*\*= HEIGHT OF SUCTION HEADER AND INSTALLED THERMOWELL FITTING ABOVE CABINET. CUSTOMER IS RESPONSIBLE TO ACCOUNT FOR ADDITIONAL HEIGHT NECESSARY FOR RTD AND ACCESS.



ROOM

SHIPPING  
WEIGHT

1690 lbs+ [770] kg+

OPERATING WEIGHT	10,000
------------------	--------

1920 lbs+ [875] kg+