



BOX SIZE	H	U
TMx18 6 ROW	142 3/4 [3626]	12'-6 1/4" [3817]
TMx18 8 ROW	151 1/4 [3842]	13'-2 3/4" [4033]
TMx18 10 ROW	159 3/4 [4058]	13'-11 1/4" [4248]
TMx18 12 ROW	168 1/4 [4273]	14'-7 3/4" [4465]

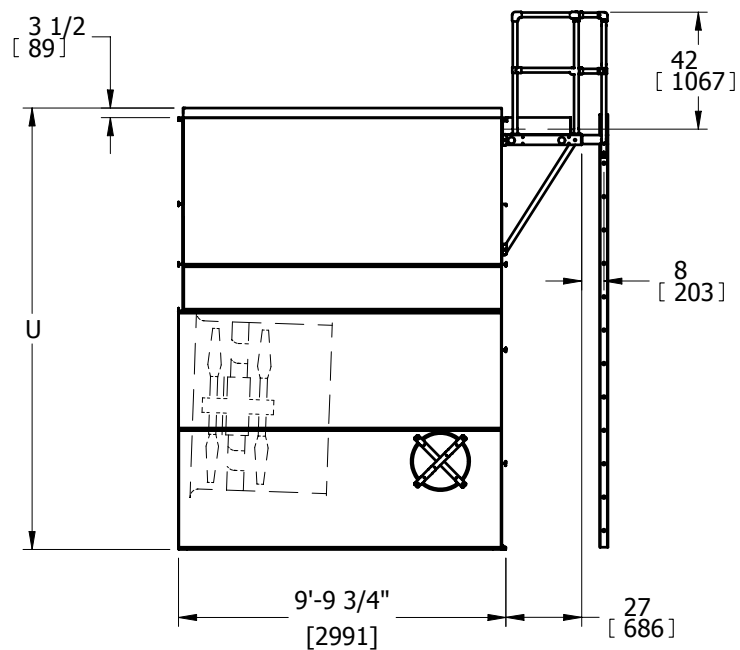
EXTERNAL SERVICE PLATFORM

OPTION A

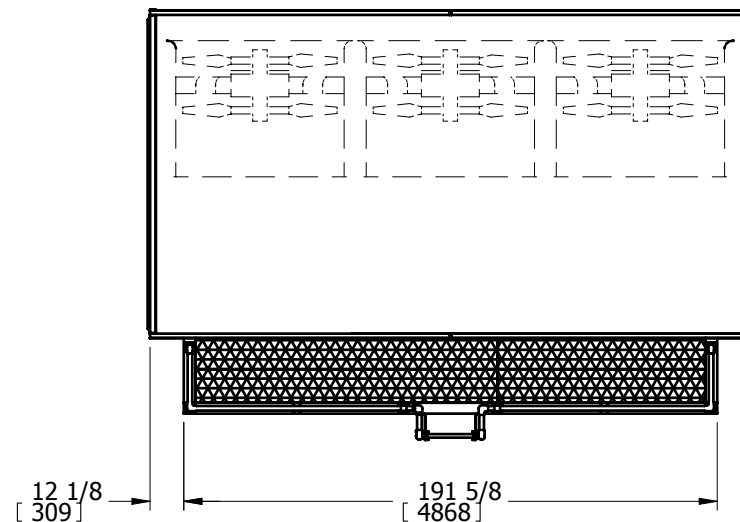
DWG. # PLCPTM18EAA-ST

NOTES:

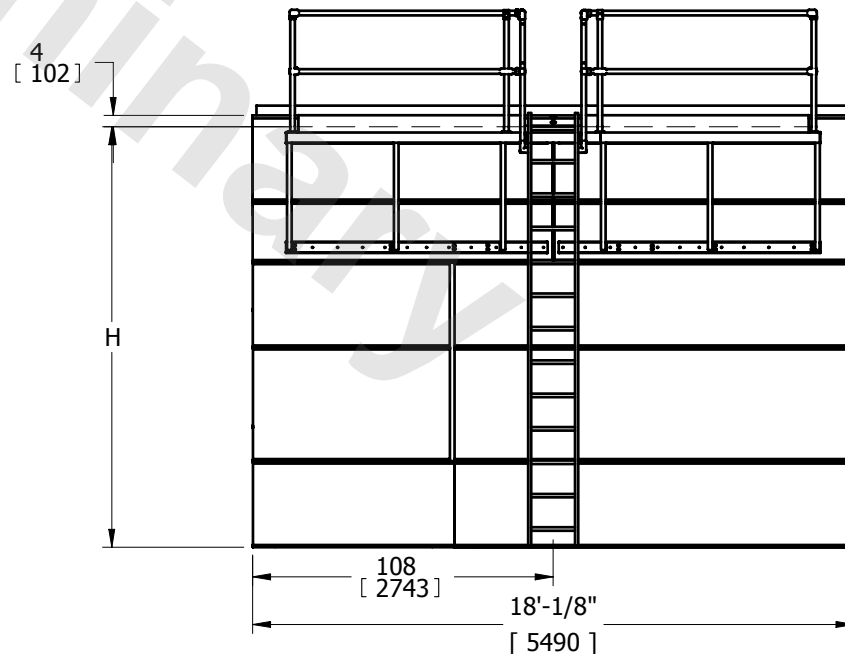
1. LADDER AND PLATFORM SHIP LOOSE.
FIELD INSTALLATION BY OTHERS IS REQUIRED.
2. THE BOTTOM OF THE LADDER DOES NOT EXTEND
PAST THE BASE OF THE UNIT. IF THE UNIT IS
ELEVATED THEN AN OPTIONAL EXTENDED LADDER
PACKAGE SHOULD BE CONSIDERED. (CONSULT FACTORY)
3. REFER TO RIGGING PACK FOR LADDER AND PLATFORM
MOUNTING INSTRUCTIONS.
4. THE PLATFORM AND LADDER ASSY. WEIGHS 1225 LBS. [555 Kg]
5. ANY POSSIBLE PIPEWORK AND/OR OBSTRUCTIONS
CONFLICTING WITH THE EXTERNAL SERVICE PLATFORM WILL
BE THE CUSTOMER'S RESPONSIBILITY FOR RELOCATION.



END VIEW



PLAN VIEW



SIDE VIEW