

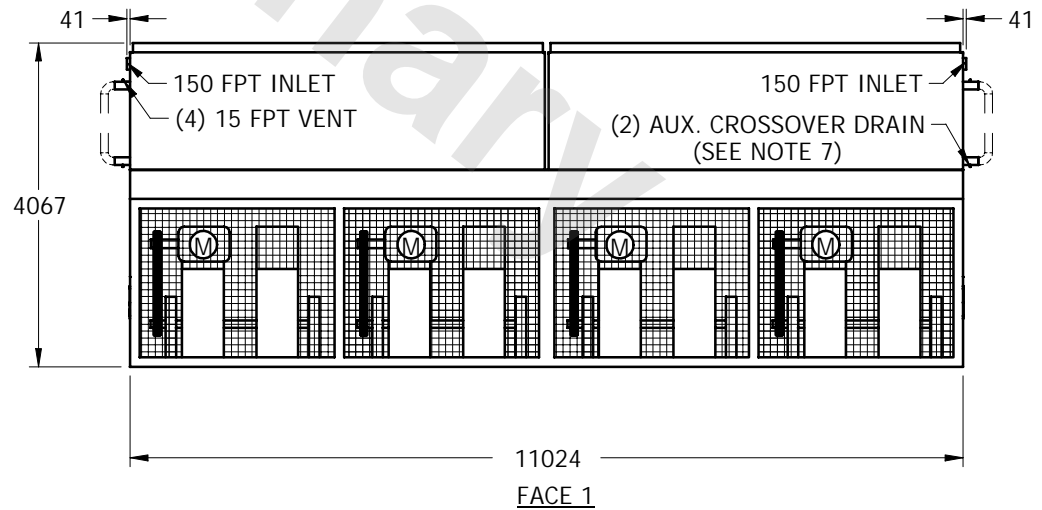
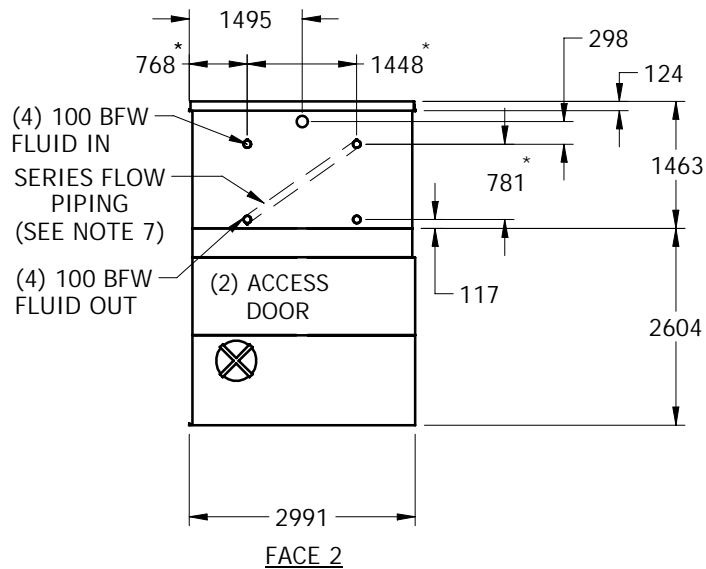
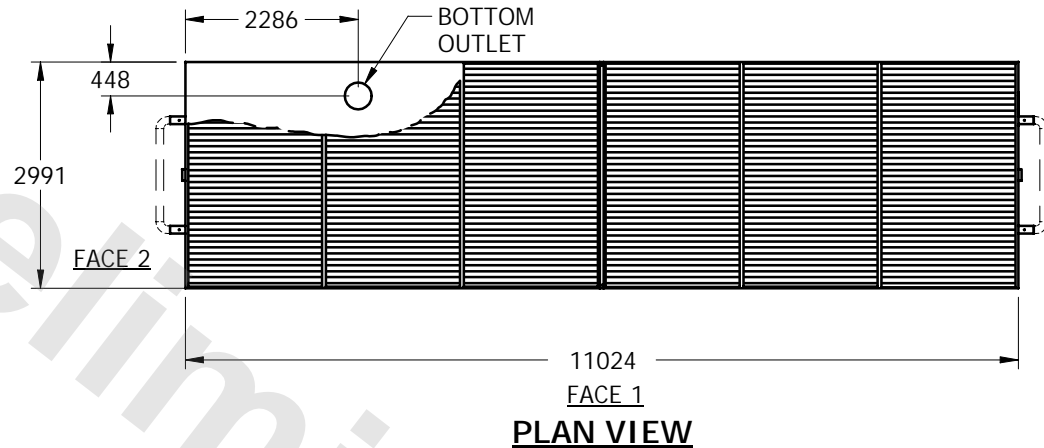
EVAPCO, INC.



UNIT	CLOSED CIRCUIT COOLER	MODEL #	LPT-539L	SCALE	NTS	DWG. #	WLTM3608-MRE-SR	REV.	-	DATE	6/17/2025	SERIAL #	
------	-----------------------	---------	----------	-------	-----	--------	-----------------	------	---	------	-----------	----------	--

NOTES:

1. (M) - FAN MOTOR LOCATION
2. HEAVIEST SECTION IS COIL SECTION
3. MPT DENOTES MALE PIPE THREAD
FPT DENOTES FEMALE PIPE THREAD
BFW DENOTES BEVELED FOR WELDING
4. + UNIT WEIGHT DOES NOT INCLUDE ACCESSORIES (SEE SEPARATE DRAWINGS FOR ACCESSORIES)
5. 19mm DIA. MOUNTING HOLES. REFER TO RECOMMENDED STEEL SUPPORT DRAWING
6. * - APPROXIMATE DIMENSIONS DO NOT USE FOR PRE-FABRICATION OF CONNECTING PIPING.
7. SERIES FLOW PIPING AND AUX. CROSSOVER DRAIN ARE BY OTHERS



SHIPPING WEIGHT	21265	kg	+	OPERATING WEIGHT	29555	kg	HEAVIEST SECTION WEIGHT	7030	kg	NO. OF SHIPPING SECTIONS	3
-----------------	-------	----	---	------------------	-------	----	-------------------------	------	----	--------------------------	---