

This document is the property of Evapco, Inc. It should not be copied or disclosed without prior written authorization.

| |
|----------|
| CUSTOMER |
|----------|

MODEL #

U-EJETME4-3763H0075F1JA

SCALE

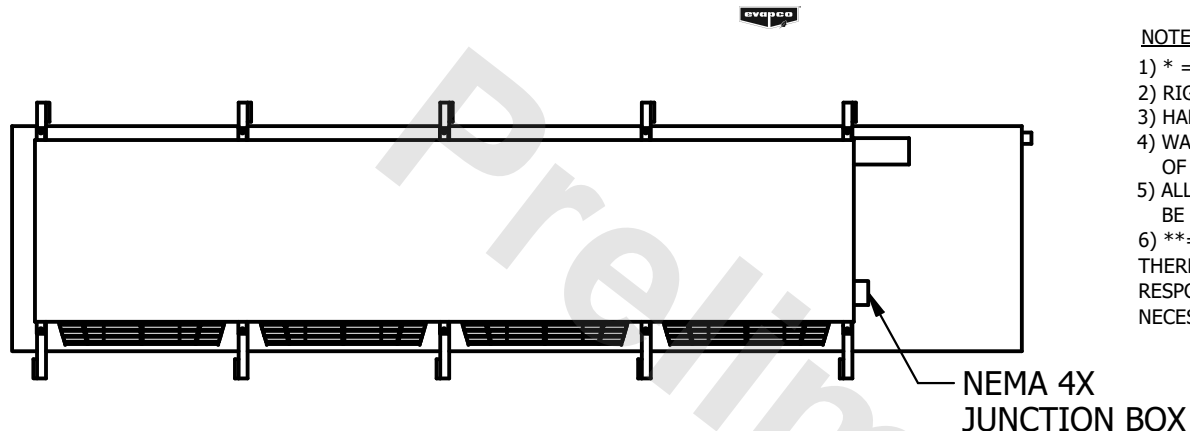
N.T.S.

DWG. #

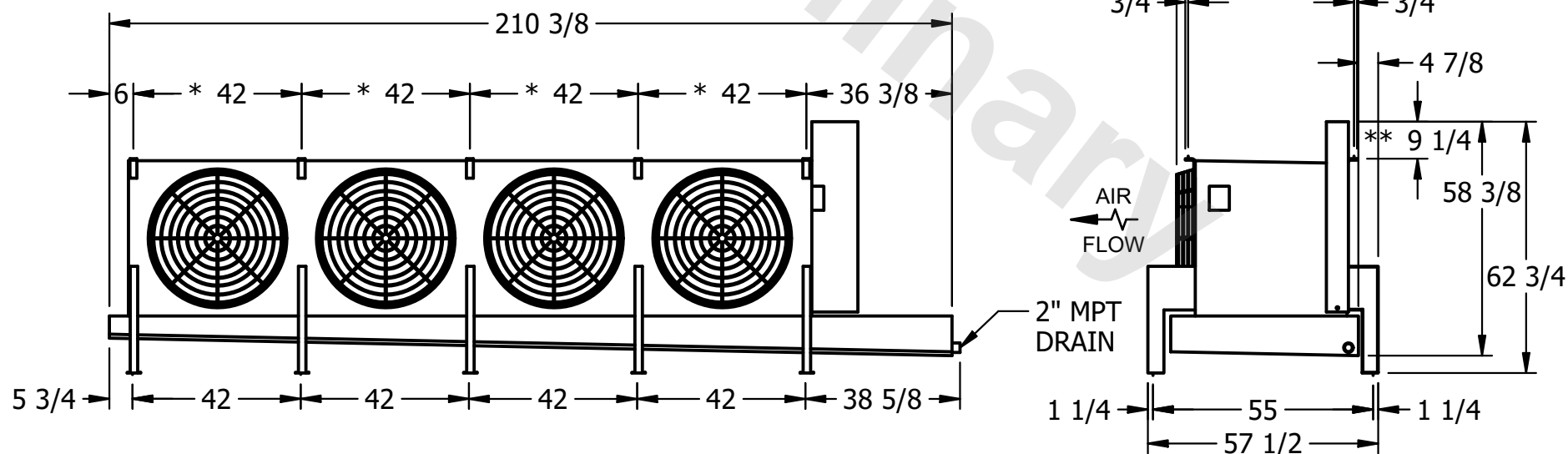
UEJTM4-SE-16,18

REV. 0

| | |
|------|-----------|
| DATE | 9/17/2025 |
|------|-----------|



- 1) * = HANGER HOLE LOCATION.
- 2) RIGHT HAND MODEL SHOWN.
- 3) HANGER HOLES ARE FOR 3/4" INCH THREADED ROD.
- 4) WATER DEFROST ADDS 1 3/4" INCHES TO HEIGHT OF STANDARD UNIT AND CHANGES DRAIN SIZE.
- 5) ALL DIMENSIONS ARE FOR REFERENCE AND SHOULD NOT BE USED FOR PREFABRICATION OF PIPING OR SUPPORTS.
- 6) **= HEIGHT OF SUCTION HEADER AND INSTALLED THERMOWELL FITTING ABOVE CABINET. CUSTOMER IS RESPONSIBLE TO ACCOUNT FOR ADDITIONAL HEIGHT NECESSARY FOR RTD AND ACCESS.



| |
|---------|
| PROJECT |
|---------|

ROOM

SHIPPING
WEIGHT

2100 lbs+ [955] kg+

| | |
|------------------|-------|
| OPERATING WEIGHT | 10000 |
|------------------|-------|

2320 lbs+ [1055] kg+