

This document is the property of Evapco, Inc. It should not be copied or disclosed without prior written authorization.

MODEL #

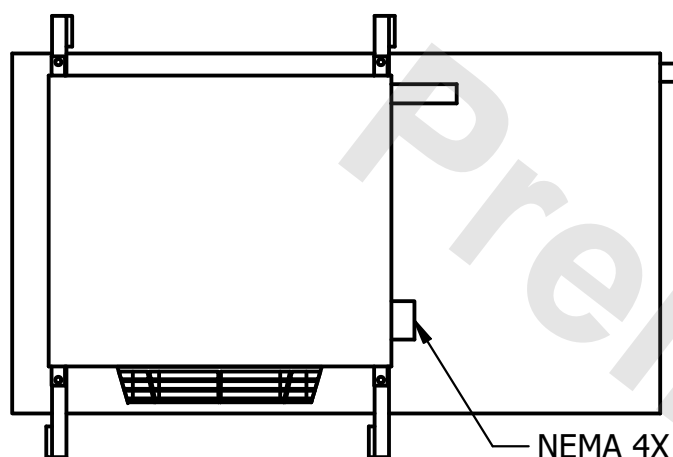
U-EJETME1-783F0050C5LA

N.T.S.

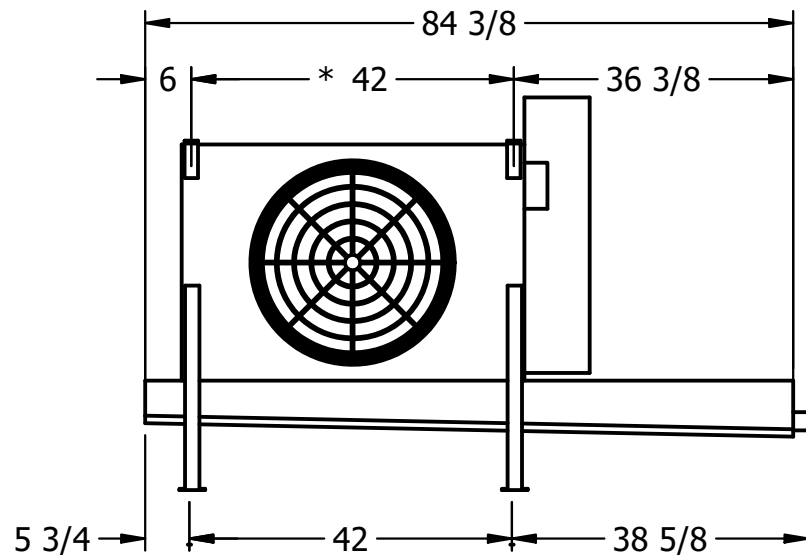
UEJETM1-SE-12,14

REV. 0

DATE	8/27/2025
------	-----------

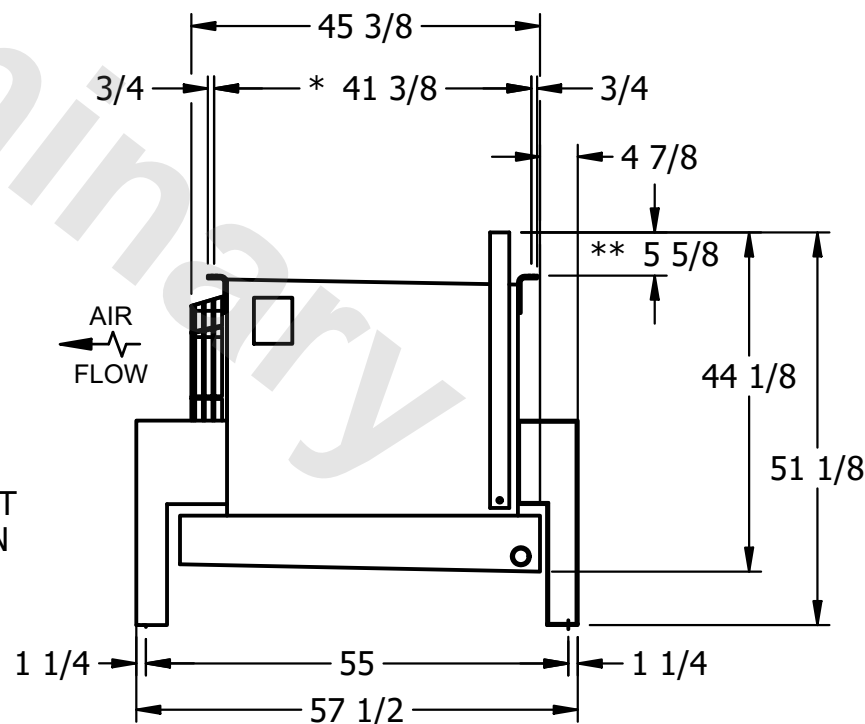


- NEMA 4X
JUNCTION BOX



- 2" MPT
DRAIN

- 1) * = HANGER HOLE LOCATION.
- 2) RIGHT HAND MODEL SHOWN.
- 3) HANGER HOLES ARE FOR 3/4 INCH THREADED ROD.
- 4) WATER DEFROST ADDS 1 3/4" INCHES TO HEIGHT OF STANDARD UNIT AND CHANGES DRAIN SIZE.
- 5) ALL DIMENSIONS ARE FOR REFERENCE AND SHOULD NOT BE USED FOR PREFABRICATION OF PIPING OR SUPPORTS.
- 6) **= HEIGHT OF SUCTION HEADER AND INSTALLED THERMOWELL FITTING ABOVE CABINET. CUSTOMER IS RESPONSIBLE TO ACCOUNT FOR ADDITIONAL HEIGHT NECESSARY FOR RTD AND ACCESS.



ROOM

SHIPPING
WEIGHT

480 lbs+ [220] kg+

OPERATING WEIGHT	10,000
------------------	--------

540 lbs+ [245] kg+