

# The RVS Advantage

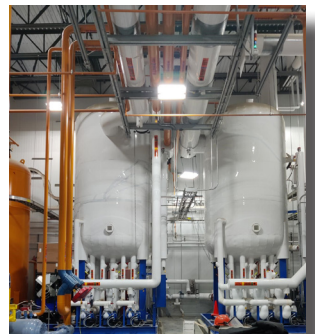


## Expertise and Support

- ▶ Engineered performance for liquid/vapor separation and no liquid carryover.
- ▶ Published catalog capacities and physical dimensions for standard product lines.
- ▶ Software to verify application specific performance and recommended line sizing.
- ▶ Engineering application and package product design capability for ammonia and CO<sub>2</sub>.
- ▶ Experienced aftermarket Service Team to provide support, start-up, training, and R-stamp alteration capability.
- ▶ Largest selection of in-stock Teikoku pumps for new applications or replacement.

## Package Design

- ▶ Vessels and package piping designed for 7" and 3" insulation clearance respectively.
- ▶ No couplings on (insulated) vessels – all field connection welds outside insulation.
- ▶ ¾" minimum piping and vessel nozzle connection size.
- ▶ Internal baffles in horizontal vessels to minimize liquid movement and pump cavitation.
- ▶ Heavy gauge internal baffles(s) in horizontal vessels to split vapor flow.
- ▶ Stainless steel pipe nameplate stand-off bracket.
- ▶ Low charge vessel/package design.
- ▶ Extended neck valves included where applicable for insulation clearance.
- ▶ Complete with all required isolation valves, locked open isolation valves (where required), pump discharge check valves, reseating relief regulators, solenoid valves, strainers, and drain/pump-out service valves.
- ▶ Vessel overpressure relief valves and two-way manifold included.
- ▶ Replaceable cartridge style overpressure relief valve on oil pot with weld in valve body.
- ▶ Oil pot, fully rated to 400# DWP and internal routing of oil pot relief and vent lines back to main vessel.
- ▶ Industry leading, Teikoku seal-less, double containment pumps – meet IIAR2 definition for Advanced Low Probability (ALP).
- ▶ Packages include level columns with level eyes and frost shields, shut off valves, drain valve, high level float switch, and Danfoss cable probe.



## Exclusive Controls

- ▶ EvapCORE™ PLC, Matrix II, Matrix LTC and Matrix LLC – proprietary control panels for vessels and packages.
- ▶ Exclusive three-year warranty for recirculator pump packages with EvapCORE PLC or Matrix II.
- ▶ Pump bearing wear monitor available in the EvapCORE PLC or Matrix II control interface.
- ▶ Patented minimum flow pump bypass control available with EvapCORE PLC or Matrix II.
- ▶ Other Factory provided control options available.

## Fit and Finish Standards

- ▶ All heads, shells, and component surfaces shot and/or sand blasted to SSPC-6 standards.
- ▶ In-house NDE (RT/PAUT) performed in accordance with ASME requirements.
- ▶ Vessels hydrostatically pressure tested in accordance with ASME Section VIII, Div. 1.
- ▶ Factory package piping welded and tested in accordance with ASME B31.5.
- ▶ Vessels and assembled package are fully evacuated, held at vacuum test pressure, and then charged with nitrogen – meeting IIAR2 full vacuum requirement, eliminating moisture and ensuring preservation until installation.
- ▶ Low-side vessels and entire assembled packages coated with high solids epoxy paint.
- ▶ Uninsulated (high-side) vessels get an additional coating of glossy acrylic, polyurethane paint for maximum UV protection.
- ▶ Control options factory mounted, wired and programmed for application specific operating parameters and set points.
- ▶ Optional field start-up and training is available.



979-778-0095  
rvscorp.com