
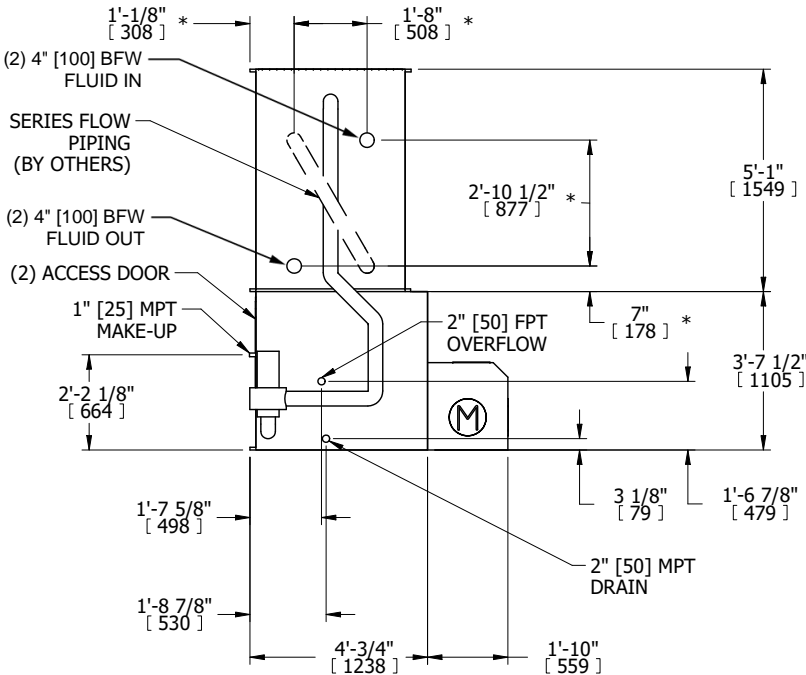
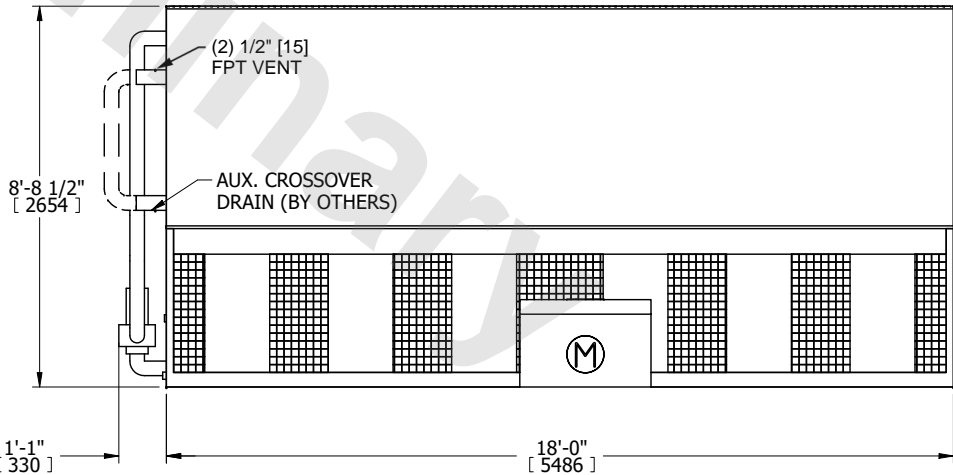
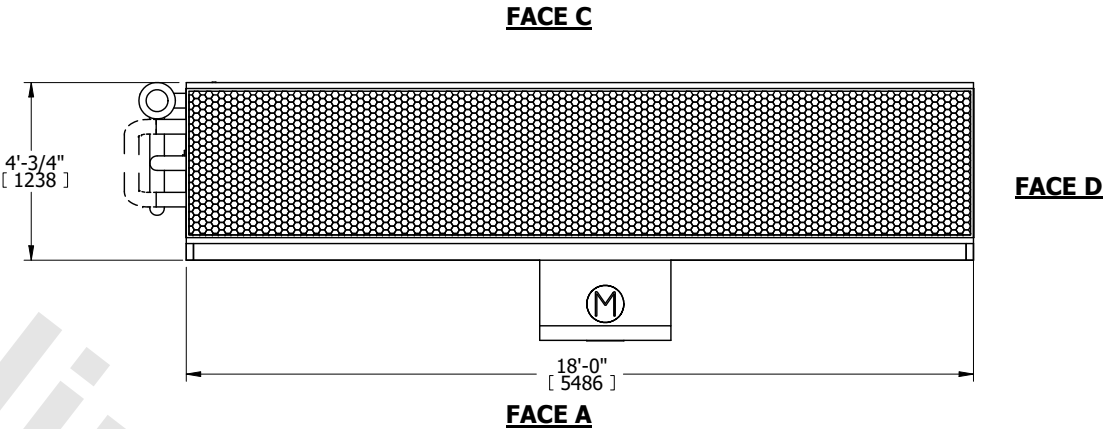


<div>UNIT</div> <div>CLOSED CIRCUIT COOLER</div>	<div>EVAPCO, INC. </div>	<div>DWG. #</div> <div>WLE041810-DRD-SF</div>	<div>REV.</div> <div>-</div>
<div>MODEL #</div> <div>eco-LSWE 4-5K18-Z</div>	<div>SCALE</div> <div>NTS</div>	<div>SERIAL #</div> <div></div>	<div>DATE</div> <div>8/26/2025</div>
<div>NOTES:</div> <ol style="list-style-type: none"> (M)- FAN MOTOR LOCATION MPT DENOTES MALE PIPE THREAD FPT DENOTES FEMALE PIPE THREAD BFW DENOTES BEVELED FOR WELDING GVD DENOTES GROOVED FLG DENOTES FLANGE PE DENOTES PLAIN END +UNIT WEIGHT DOES NOT INCLUDE ACCESSORIES (SEE ACCESSORY DRAWINGS) 3/4" [19mm] DIA. MOUNTING HOLES. REFER TO RECOMMENDED STEEL SUPPORT DRAWING DIMENSIONS LISTED AS FOLLOWS: ENGLISH FT IN [METRIC] [mm] * - APPROXIMATE DIMENSIONS DO NOT USE FOR PRE-FABRICATION OF CONNECTING PIPING HEAVIEST SECTION IS COIL SECTION MAKE-UP WATER PRESSURE 20 psi [137 kPa] MIN, 50 psi [344 kPa] MAX MAKE-UP CONNECTION LOCATED 7-5/8" [194] FROM CONNECTION END OF UNIT SERIES FLOW PIPING AND AUX. CROSSOVER DRAIN ARE BY OTHERS 			
<div>SHIPPING WEIGHT</div> <div>11250 lbs+ [5105] kg+</div>	<div>OPERATING WEIGHT</div> <div>14850 lbs+ [6740] kg+</div>	<div>HEAVIEST SECTION WEIGHT</div> <div>8310 lbs+ [3770] kg+</div>	<div>NO. OF SHIPPING SECTIONS</div> <div>2</div> <div>DRAWN BY:</div> <div>TLS</div>

FACE B
PLAN VIEW



FACE B



FACE A