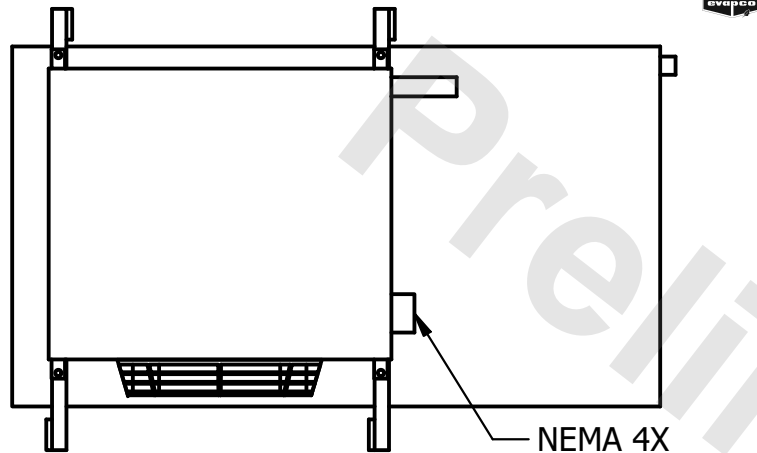


CONFIDENTIAL

This document is the property of Evapco, Inc. It should not be copied or disclosed without prior written authorization.

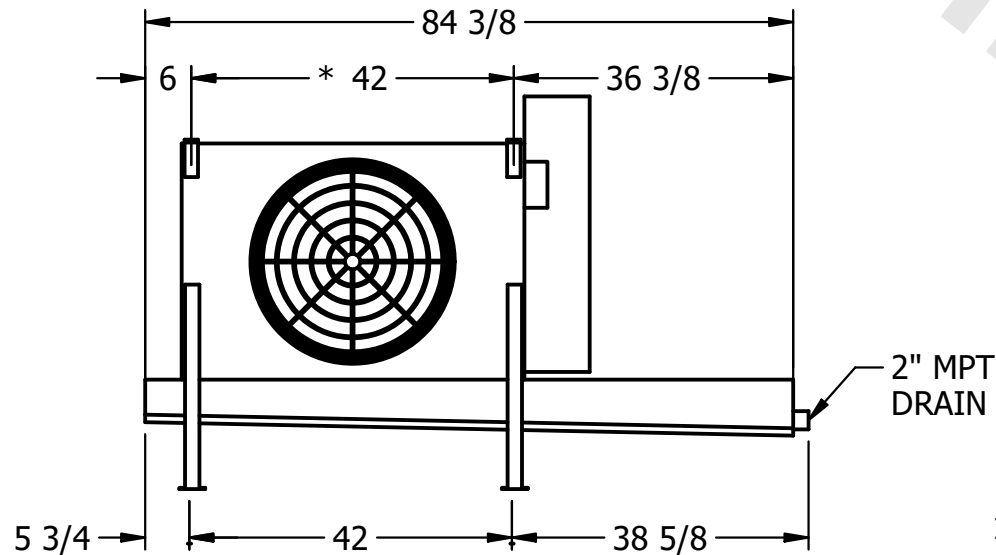
| | | | | | |
|----------|------------------------|--------|------------------|------|-----------|
| CUSTOMER | MODEL # | SCALE | DWG. # | REV. | DATE |
| | U-EJETME1-843F0050C5LA | N.T.S. | UEJETM1-SE-12,14 | 0 | 8/29/2025 |



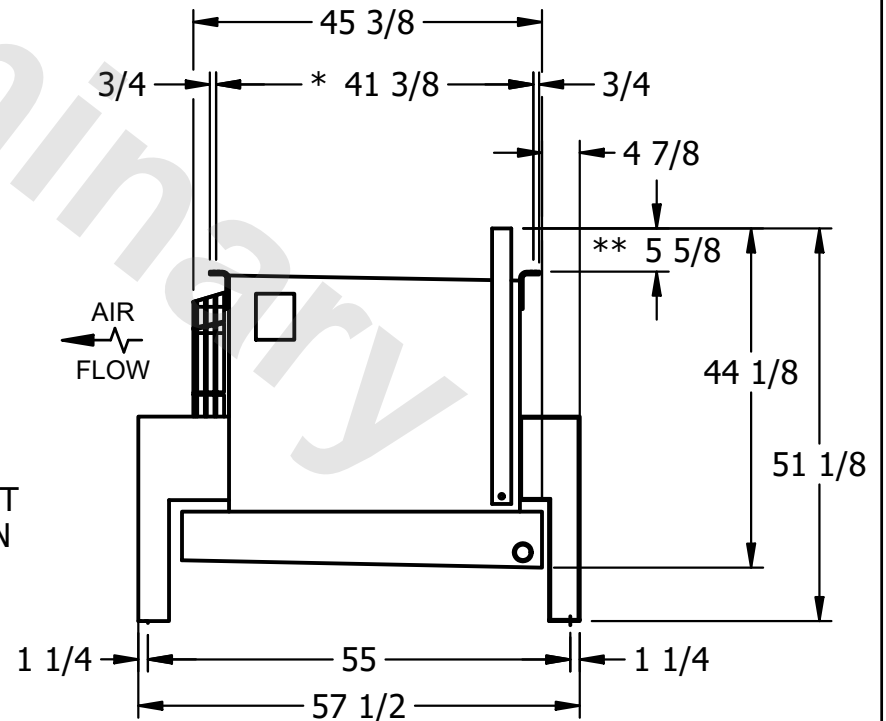
NEMA 4X
JUNCTION BOX

NOTES:

- 1) * = HANGER HOLE LOCATION.
- 2) RIGHT HAND MODEL SHOWN.
- 3) HANGER HOLES ARE FOR 3/4 INCH THREADED ROD.
- 4) WATER DEFROST ADDS 1 3/4" INCHES TO HEIGHT OF STANDARD UNIT AND CHANGES DRAIN SIZE.
- 5) ALL DIMENSIONS ARE FOR REFERENCE AND SHOULD NOT BE USED FOR PREFABRICATION OF PIPING OR SUPPORTS.
- 6) **= HEIGHT OF SUCTION HEADER AND INSTALLED THERMOWELL FITTING ABOVE CABINET. CUSTOMER IS RESPONSIBLE TO ACCOUNT FOR ADDITIONAL HEIGHT NECESSARY FOR RTD AND ACCESS.



2" MPT
DRAIN



| | | | |
|---------|------|--------------------|--------------------|
| PROJECT | ROOM | SHIPPING WEIGHT | OPERATING WEIGHT |
| | | 440 lbs+ [200] kg+ | 480 lbs+ [220] kg+ |