

This document is the property of Evapco, Inc. It should not be copied or disclosed without prior written authorization.

MODEL #

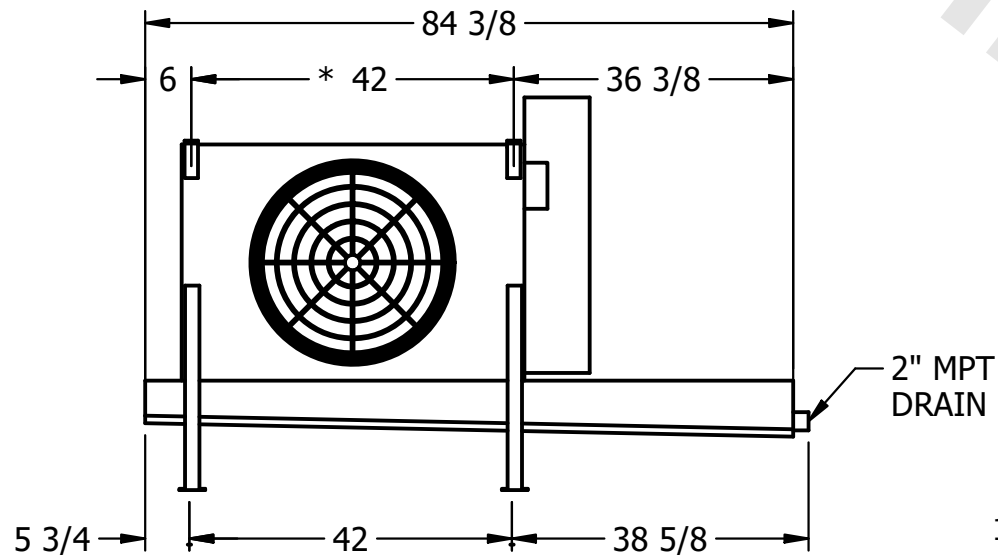
U-EJETME1-846F0033C1KA

N.T.S.

UEJETM1-SE-12,14

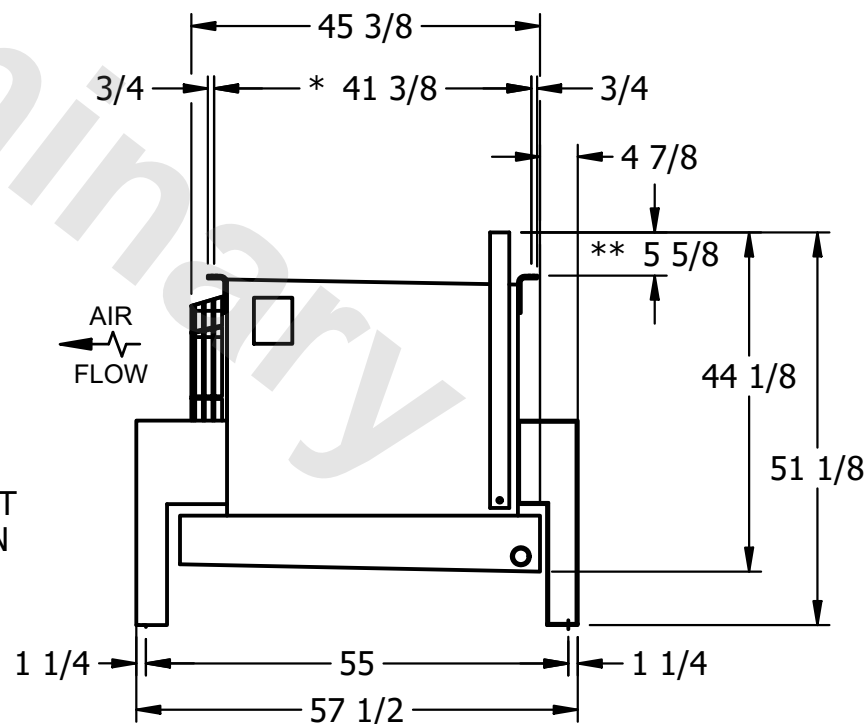
REV. 0

DATE	8/29/2025
------	-----------



NOTES:

- 1) * = HANGER HOLE LOCATION.
- 2) RIGHT HAND MODEL SHOWN.
- 3) HANGER HOLES ARE FOR 3/4" INCH THREADED ROD.
- 4) WATER DEFROST ADDS 1 3/4" INCHES TO HEIGHT OF STANDARD UNIT AND CHANGES DRAIN SIZE.
- 5) ALL DIMENSIONS ARE FOR REFERENCE AND SHOULD NOT BE USED FOR PREFABRICATION OF PIPING OR SUPPORTS.
- 6) ** = HEIGHT OF SUCTION HEADER AND INSTALLED THERMOWELL FITTING ABOVE CABINET. CUSTOMER IS RESPONSIBLE TO ACCOUNT FOR ADDITIONAL HEIGHT NECESSARY FOR RTD AND ACCESS.



ROOM

SHIPPING
WEIGHT

500 lbs+ [230] kg+

OPERATING WEIGHT	10000
------------------	-------

550 lbs+ [250] kg+