

**CONFIDENTIAL**

This document is the property of Evapco, Inc. It should not be copied or disclosed without prior written authorization.

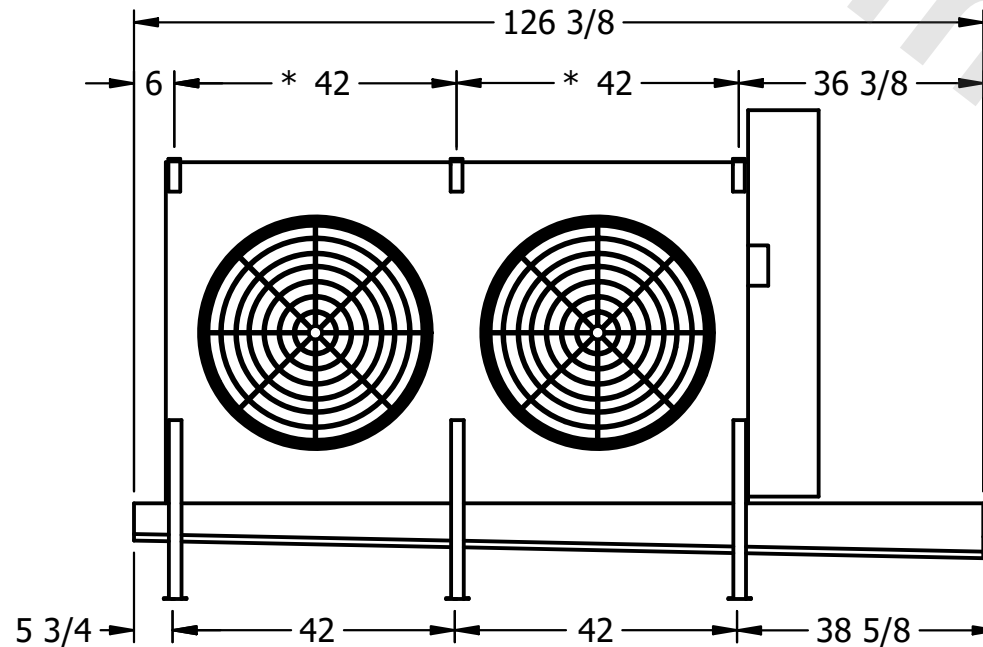
|          |                                 |              |                      |        |                |
|----------|---------------------------------|--------------|----------------------|--------|----------------|
| CUSTOMER | MODEL # U-EJETME2-2844F0075F1LA | SCALE N.T.S. | DWG. # UEJETM2-SE-24 | REV. 0 | DATE 7/27/2025 |
|----------|---------------------------------|--------------|----------------------|--------|----------------|



NEMA 4X  
JUNCTION BOX

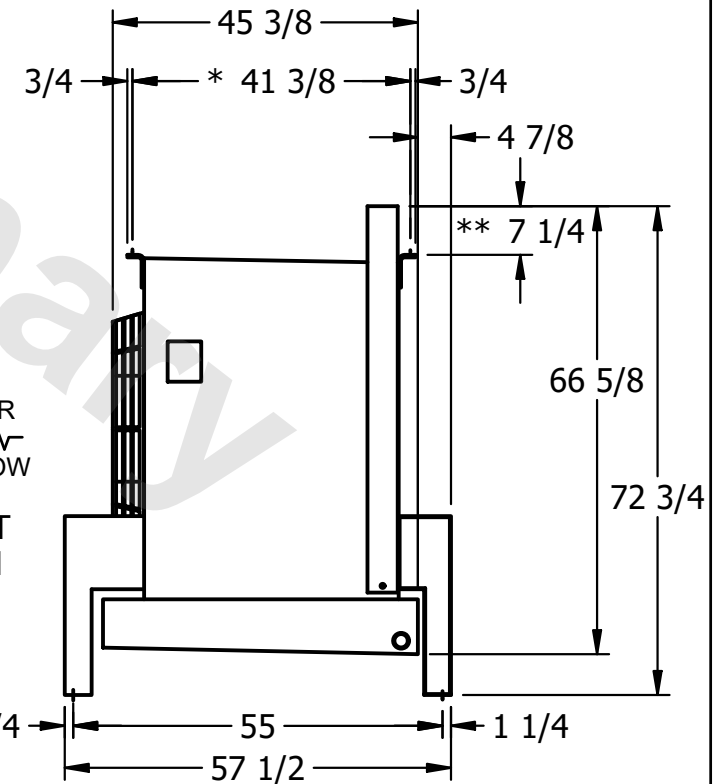
**NOTES:**

- 1) \* = HANGER HOLE LOCATION.
- 2) RIGHT HAND MODEL SHOWN.
- 3) HANGER HOLES ARE FOR 3/4 INCH THREADED ROD.
- 4) WATER DEFROST ADDS 1 3/4" INCHES TO HEIGHT OF STANDARD UNIT AND CHANGES DRAIN SIZE.
- 5) ALL DIMENSIONS ARE FOR REFERENCE AND SHOULD NOT BE USED FOR PREFABRICATION OF PIPING OR SUPPORTS.
- 6) \*\*= HEIGHT OF SUCTION HEADER AND INSTALLED THERMOWELL FITTING ABOVE CABINET. CUSTOMER IS RESPONSIBLE TO ACCOUNT FOR ADDITIONAL HEIGHT NECESSARY FOR RTD AND ACCESS.



AIR  
FLOW

2" MPT  
DRAIN



|         |      |                 |                    |                  |                     |
|---------|------|-----------------|--------------------|------------------|---------------------|
| PROJECT | ROOM | SHIPPING WEIGHT | 970 lbs+ [440] kg+ | OPERATING WEIGHT | 1100 lbs+ [500] kg+ |
|---------|------|-----------------|--------------------|------------------|---------------------|