

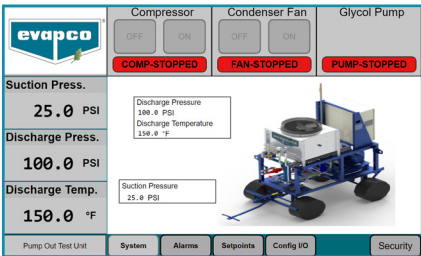
ROVER PUMPOUT UNIT

The ultimate solution for fast and easy Evapcold® field service in a factory-assembled, mobile package.



The *natural* evolution of ammonia refrigeration.

The Evapcold® Rover Pumpout Unit (LCR-PO) provides the ability to pump out a full or partial ammonia charge from a packaged low charge system. This gives facility owners, operators and service technicians peace of mind that ammonia can be safely evacuated from their refrigeration system to ensure safe servicing. **Specifically designed for use with the Evapcold® Low Charge Refrigeration (LCR) packages, the Rover is also suitable for any ammonia system.**



FACTORY MOUNTED PLC CONTROLLER

WITH A COLOR HMI MOUNTED IN A WEATHERPROOF NEMA 4 ENCLOSURE

- OFFERS SEVERAL SAFETY FEATURES, INCLUDING:
- High discharge pressure and temperature cutouts
 - Low suction pressure cutout
 - Plug-in digital input for external vessel high level cutout switch (by others)
 - Strobe light and audible horn

COMMON UNIT RELIEF HEADER RISER

RECIPROCATING COMPRESSOR WITH 3 HP TEFC MOTOR

1/2 HP AIR-COOLED CONDENSER WITH GLYCOL CIRCUIT FOR COMPRESSOR HEAD COOLING

(3) 1" MPT CONNECTIONS FOR SUCTION, COMPRESSOR DISCHARGE & CONDENSER OUTLET

COMPACT DESIGN 4'W X 5'L X 7'H (APPROX.)

LIFTING POINTS FOR CRANES

STORAGE HOOKS FOR HOSES

1,200 -LBS UNIT EASILY MOVED VIA DROP-BRAKE TROLLEY HANDLE & FLAT-FREE TIRES



LOW CHARGE REFRIGERATION PUMPOUT UNIT FEATURES AND BENEFITS

- Portable design featuring flat-free tires, trolley handle and optional trailer hitch coupling allows for easy movement onsite
- Air-cooled design for simple plug-&-play operation
- Designed for push-pull liquid & gas pumpout operation with nominal 45.5 lb. per hour suction gas flow for effective ammonia recovery
- 1" MPT connections for use with ammonia hoses
- Engineered crane lifting points and forklift channels
- Compact size for easy storage on site
- TEFC 3 HP compressor and 0.5 HP condenser motors for all-weather rooftop operation
- Reciprocating compressor with glycol head cooling
- Provided with 15 ft. power cord designed for use with 460V pump out receptacle on Evapcold® service panels
- Relief header riser pipe stores in unit channel for movement on site and is easily threaded in place
- Factory leak test and electrical checkout for every unit
- Allows pumpout procedures to be safely implemented by trained technicians

LEARN MORE AT EVAPCO.COM

